

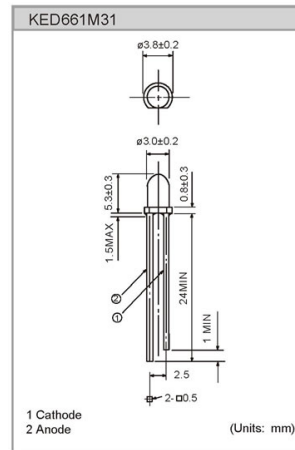
Plastic Mold Visible LEDs KED661M31

Features

- Transparent epoxy mold
- High luminous Intensity
- Direct modulation

Applications

- Optical switches
- Optical instruments
- Automatic control apparatus



Specifications

Absolute Maximum Ratings

Parameter	Symbol	Value	Unit	Conditions
Forward current	I_F	50	mA	
Peak forward current	I_{FP}	0.5	A	Puls width=100 μ s, Duty ratio=1%
Reverse voltage	V_R	6	V	
Power dissipation	P_D	120	mW	
Operating temperature	T_{opr}	-20 to +80		Avoid dew condensation
Storage temperature	T_{stg}	-30 to +100		Avoid dew condensation
Soldering temperature	T_{sol}	260		Soldering time less than 5 seconds

Electrical and Optical characteristics

Parameter	Symbol	Value			Unit	Conditions
		Min.	Typ.	Max		
Forward voltage	V_F		1.8	2.3	V	$I_F=20\text{mA}$
Reverse Current	I_R			10	μ A	$V_R=6\text{V}$
Luminous Intensity I_v	I_v		400		mcd	$I_F=20\text{mA}$
Optical output power	P_O		3.5		mW	$I_F=20\text{mA}$
Peak wavelength	λ_p		660		nm	$I_F=20\text{mA}$
Spectral width			25		nm	$I_F=20\text{mA}$
Half angle	2		30		deg	$I_F=20\text{mA}$

